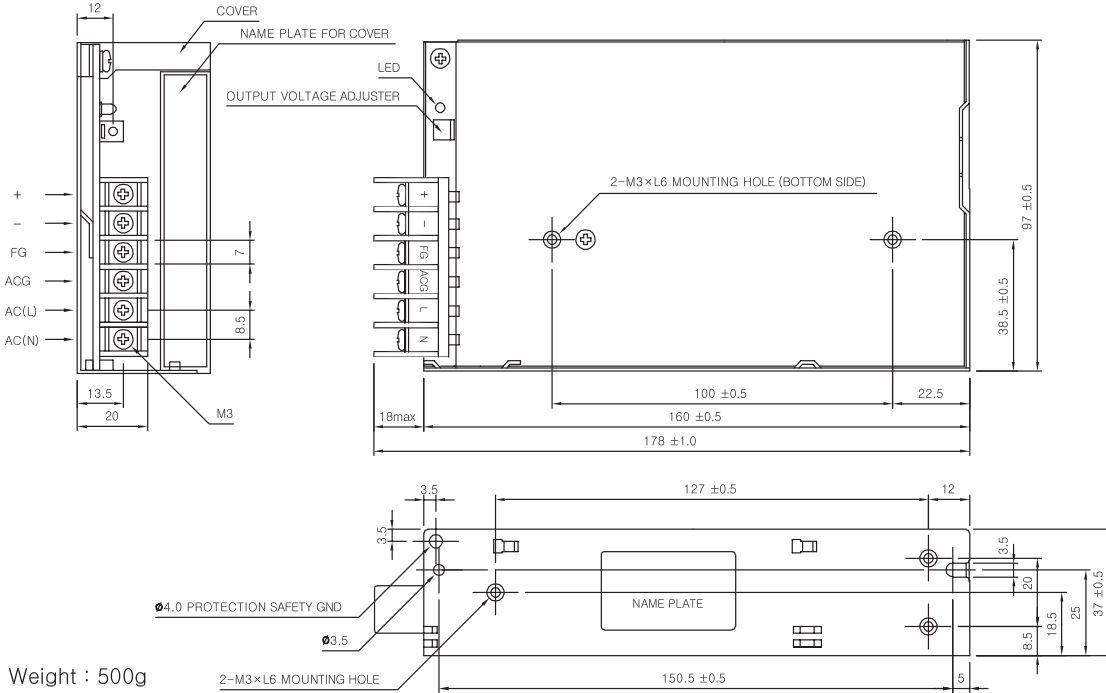


MSF50, 60, 80-S EXTERNAL VIEW



* Weight : 500g
 * Tolerance : ±1
 * Dimensions in mm

MSF100-S SPECIFICATIONS



	MODEL	MSF100-3R3	MSF100-05	MSF100-09	MSF100-12	MSF100-15
INPUT	VOLTAGE, FREQUENCY	AC100-120V / 200~240V (AC85~132V / 170~264V or DC240~370V), 50/60Hz (47~440Hz or DC)				
	CURRENT	100V~2.5A, 200V~1.4A				
	EFFICIENCY (AC220V)	70% typ	80% typ	81% typ	81% typ	81% typ
	INRUSH CURRENT	20A typ (ACIN 110V, I _o =100%), 40A typ (ACIN 220V, I _o =100%) at cold start.				
OUTPUT	VOLTAGE [V]	3.3	5	9	12	15
	CURRENT [A]	20	20	11.1	8.3	6.7
	REGULATION, LINE [mV]	25 Max	25 Max	45 Max	60 Max	75 Max
	REGULATION, LOAD [mV]	50 Max	50 Max	90 Max	120 Max	150 Max
	RIPPLE [mVp-p]	50 Max	50 Max	90 Max	120 Max	150 Max
	RIPPLE, NOISE [mVp-p]	100 Max	100 Max	140 Max	170 Max	200 Max
	TEMPERATURE DRIFT 0~+50°C [mV]	50 Max	75 Max	135 Max	180 Max	225 Max
	RISE TIME [ms]	500 max (ACIN 110V, I _o =100%)				
HOLDING TIME [ms]	16 typ (ACIN 110V, I _o =100%)					
PROTECTION CIRCUIT	OVER CURRENT PROTECTION	Works at over 110% of rating and recovers automatically				
	OVER VOLTAGE PROTECTION	Works at 115~140% of rating (In the case of 3.3V, it is 115~160%)				
ELECTRICALLY ISOLATED	INPUT-OUTPUT	AC3,000V 1 minute current 20mA, DC 500V 100MΩ (At room temperature & Humidity)				
	INPUT-CASE, FG	AC2,000V 1 minute current 20mA, DC 500V 100MΩ (At room temperature & Humidity)				
	OUTPUT-CASE, FG	AC500V 1 minute current 100mA, DC 500V 100MΩ (At room temperature & Humidity)				
ENVIRONMENT	OPERATING TEMP AND HUMID	-10~+50°C, 20~90% RH(Non condensing)				
	STORAGE TEMP AND HUMID	-20~+75°C, 20~90% RH(Non condensing)				
	VIBRATION	10~55Hz at 1G, 3 minutes period, 30 minutes along X, Y and Z axis				
	IMPACT	10G for 20ms once on each X, Y and Z axis				
SAFETY	SAFETY REGULATION	UL, C-UL, CE	UL, C-UL, CE	UL, C-UL, CE	UL, C-UL, CE	UL, C-UL, CE
	LINE CONDUCTED RF VOLTAGE	Complied with FCC Part15 and EN55022 Class A Limits				