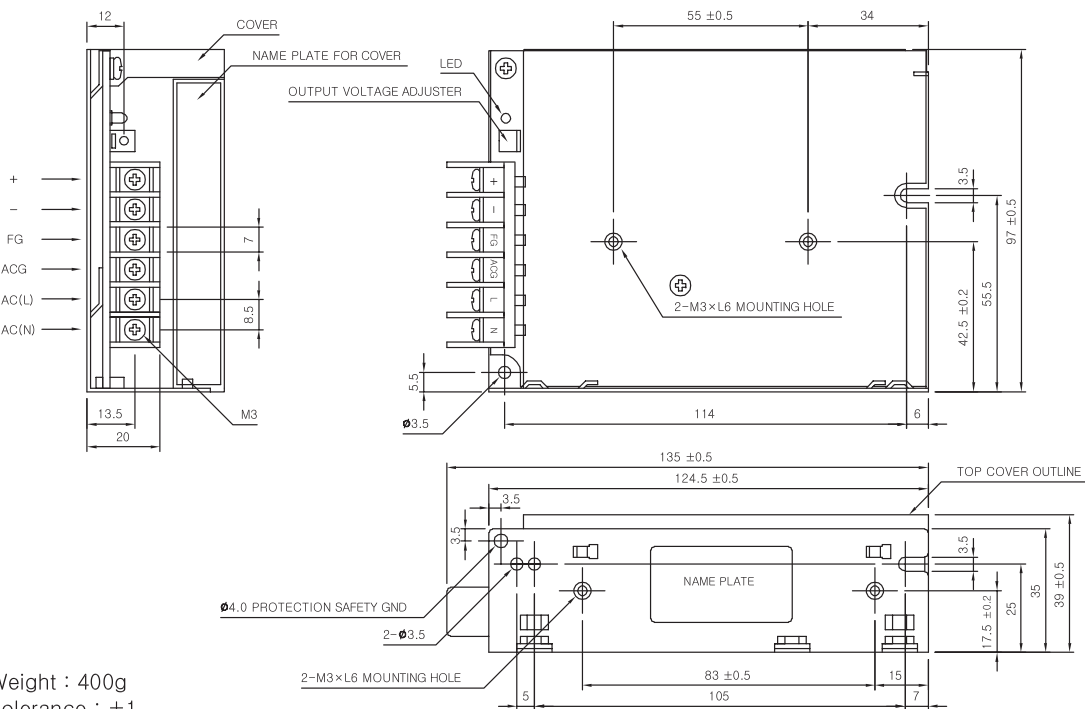


MSF35-S SPECIFICATIONS



	MODEL	MSF35-3R3	MSF35-05	MSF35-09	MSF35-12	MSF35-15	MSF35-24	MSF35-48
INPUT	VOLTAGE, FREQUENCY	AC100-240V (AC85~264V or DC120~370V), 50/60Hz (47~440Hz or DC)						
	CURRENT	100V~1.0A, 200V~0.5A						
	EFFICIENCY (AC220V)	60% typ	70% typ	70% typ	75% typ	75% typ	75% typ	75% typ
	INRUSH CURRENT	20A typ (ACIN 110V, I <sub>o</sub> =100%), 40A typ (ACIN 220V, I <sub>o</sub> =100%) Ta=(25°C of cold start).						
OUTPUT	VOLTAGE [V]	3.3	5	9	12	15	24	48
	CURRENT [A]	7	7	4	3	2.4	1.5	0.75
	REGULATION, LINE [mV]	25 Max	25 Max	45 Max	60 Max	75 Max	120 Max	240 Max
	REGULATION, LOAD [mV]	50 Max	50 Max	90 Max	120 Max	150 Max	240 Max	480 Max
	RIPPLE [mVp-p]	80 Max	80 Max	90 Max	120 Max	150 Max	240 Max	480 Max
	RIPPLE, NOISE [mVp-p]	120 Max	120 Max	140 Max	170 Max	200 Max	290 Max	530 Max
	TEMPERATURE DRIFT 0~+50°C [mV]	50 Max	75 Max	135 Max	180 Max	225 Max	360 Max	720 Max
	RISE TIME [ms]	1500 max (ACIN 110V, I <sub>o</sub> =100%)						
	HOLDING TIME [ms]	16 typ (ACIN 110V, I <sub>o</sub> =100%)						
	PROTECTION CIRCUIT	OVER CURRENT PROTECTION	Works at over 110% of rating and recovers automatically					
OVER VOLTAGE PROTECTION		Works at 115~140% of rating (In the case of 3.3V, it is 115~160%)						
ELECTRICALLY ISOLATED	INPUT-OUTPUT	AC3,000V 1 minute current 20mA, DC 500V 100MΩ (At room temperature & Humidity)						
	INPUT-CASE, FG	AC2,000V 1 minute current 20mA, DC 500V 100MΩ (At room temperature & Humidity)						
	OUTPUT-CASE, FG	AC500V 1 minute current 100mA, DC 500V 100MΩ (At room temperature & Humidity)						
ENVIRONMENT	OPERATING TEMP AND HUMID	-10~+50°C, 20~90% RH(Non condensing)						
	STORAGE TEMP AND HUMID	-20~+75°C, 20~90% RH(Non condensing)						
	VIBRATION	10~55Hz at 1G, 3 minutes period, 30 minutes along X, Y and Z axis						
	IMPACT	10G for 20ms once on each X, Y and Z axis						
SAFETY	SAFETY REGULATION	UL,C-UL,CE	UL,C-UL,CE	-	UL,C-UL,CE	UL,C-UL,CE	UL,C-UL,CE	UL,C-UL,CE
	LINE CONDUCTED RF VOLTAGE	Complied with FCC Part15 and EN55022 Class A Limits						

MSF35-S EXTERNAL VIEW



- \* Weight : 400g
- \* Tolerance : ±1
- \* Dimensions in mm