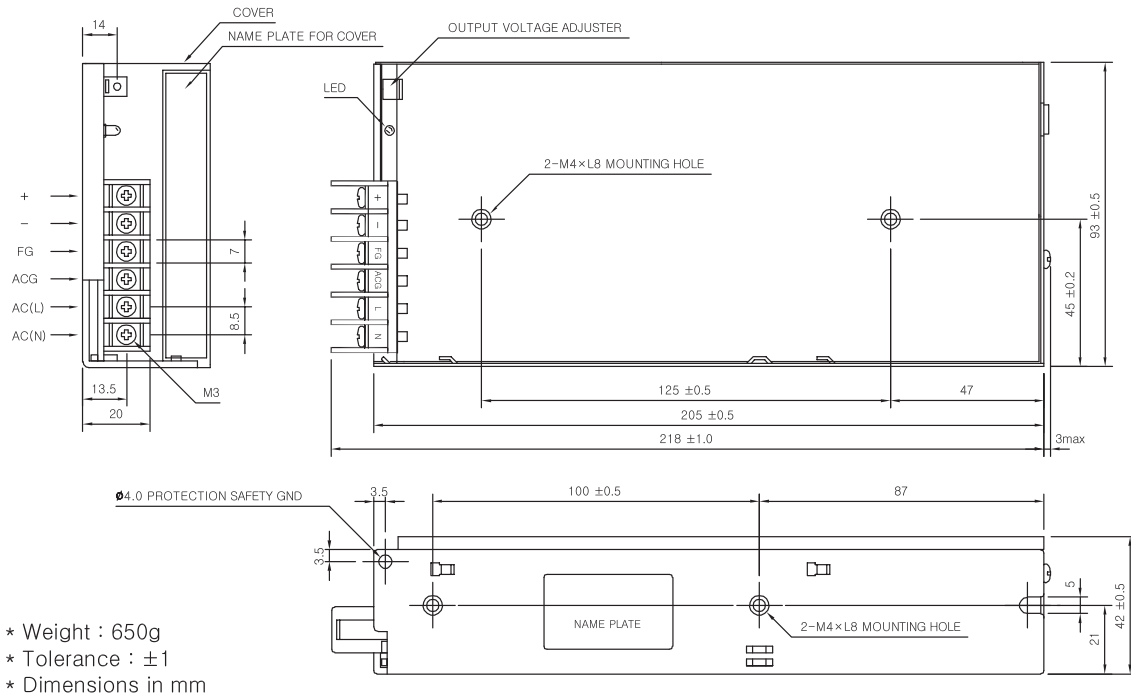


MSF100-S EXTERNAL VIEW



MSF100-S SPECIFICATIONS



| | MODEL | MSF100-3R3 | MSF100-05 | MSF100-09 | MSF100-12 | MSF100-15 |
|-----------------------|--|---|--------------|--------------|--------------|--------------|
| INPUT | VOLTAGE, FREQUENCY | AC100-120V / 200~240V (AC85~132V / 170~264V or DC240~370V), 50/60Hz (47~440Hz or DC) | | | | |
| | CURRENT | 100V~2.5A, 200V~1.4A | | | | |
| | EFFICIENCY (AC220V) | 70% typ | 80% typ | 81% typ | 81% typ | 81% typ |
| | INRUSH CURRENT | 20A typ (ACIN 110V, I _c =100%), 40A typ (ACIN 220V, I _c =100%) at cold start. | | | | |
| OUTPUT | VOLTAGE [V] | 3.3 | 5 | 9 | 12 | 15 |
| | CURRENT [A] | 20 | 20 | 11.1 | 8.3 | 6.7 |
| | REGULATION, LINE [mV] | 25 Max | 25 Max | 45 Max | 60 Max | 75 Max |
| | REGULATION, LOAD [mV] | 50 Max | 50 Max | 90 Max | 120 Max | 150 Max |
| | RIPPLE [mVp-p] | 50 Max | 50 Max | 90 Max | 120 Max | 150 Max |
| | RIPPLE, NOISE [mVp-p] | 100 Max | 100 Max | 140 Max | 170 Max | 200 Max |
| | TEMPERATURE DRIFT 0~+50°C [mV] | 50 Max | 75 Max | 135 Max | 180 Max | 225 Max |
| | RISE TIME [ms] | 500 max (ACIN 110V, I _c =100%) | | | | |
| HOLDING TIME [ms] | 16 typ (ACIN 110V, I _c =100%) | | | | | |
| PROTECTION CIRCUIT | OVER CURRENT PROTECTION | Works at over 110% of rating and recovers automatically | | | | |
| | OVER VOLTAGE PROTECTION | Works at 115~140% of rating (In the case of 3.3V, it is 115~160%) | | | | |
| ELECTRICALLY ISOLATED | INPUT-OUTPUT | AC3,000V 1 minute current 20mA, DC 500V 100MΩ (At room temperature & Humidity) | | | | |
| | INPUT-CASE, FG | AC2,000V 1 minute current 20mA, DC 500V 100MΩ (At room temperature & Humidity) | | | | |
| | OUTPUT-CASE, FG | AC500V 1 minute current 100mA, DC 500V 100MΩ (At room temperature & Humidity) | | | | |
| ENVIRONMENT | OPERATING TEMP AND HUMID | -10~+50°C, 20~90% RH(Non condensing) | | | | |
| | STORAGE TEMP AND HUMID | -20~+75°C, 20~90% RH(Non condensing) | | | | |
| | VIBRATION | 10~55Hz at 1G, 3 minutes period, 30 minutes along X, Y and Z axis | | | | |
| | IMPACT | 10G for 20ms once on each X, Y and Z axis | | | | |
| SAFETY | SAFETY REGULATION | UL, C-UL, CE | UL, C-UL, CE | UL, C-UL, CE | UL, C-UL, CE | UL, C-UL, CE |
| | LINE CONDUCTED RF VOLTAGE | Complied with FCC Part15 and EN55022 Class A Limits | | | | |

MSF100-S SPECIFICATIONS



| | MODEL | MSF100-24 | MSF100-28 | MSF100-36 | MSF100-48 |
|-----------------------|--------------------------------|---|--------------|--------------|--------------|
| INPUT | VOLTAGE, FREQUENCY | AC100-120V / 200-240V (AC85~132V / 170~264V or DC240~370V), 50/60Hz (474~440Hz or DC) | | | |
| | CURRENT | 100V~2.5A, 200V~1.4A | | | |
| | EFFICIENCY (AC220V) | 82% typ | 82% typ | 82% typ | 82% typ |
| | INRUSH CURRENT | 20A typ(ACIN 110V, I ₀ =100%), 40A typ(ACIN 220V, I ₀ =100%) at cold start. | | | |
| OUTPUT | VOLTAGE [V] | 24 | 28 | 36 | 48 |
| | CURRENT [A] | 4.2 | 3.5 | 2.8 | 2.1 |
| | REGULATION, LINE [mV] | 120 Max | 140 Max | 180 Max | 240 Max |
| | REGULATION, LOAD [mV] | 240 Max | 280 Max | 360 Max | 480 Max |
| | RIPPLE [mVp-p] | 240 Max | 280 Max | 360 Max | 480 Max |
| | RIPPLE, NOISE [mVp-p] | 290 Max | 330 Max | 410 Max | 530 Max |
| | TEMPERATURE DRIFT 0~+50°C [mV] | 360 Max | 420 Max | 540 Max | 720 Max |
| | RISE TIME [ms] | 500 max (ACIN 110V, I ₀ =100%) | | | |
| | HOLDING TIME [ms] | 16 typ (ACIN 110V, I ₀ =100%) | | | |
| PROTECTION CIRCUIT | OVER CURRENT PROTECTION | Works at over 110% of rating and recovers automatically | | | |
| | OVER VOLTAGE PROTECTION | Works at 115~140% of rating | | | |
| ELECTRICALLY ISOLATED | INPUT-OUTPUT | AC3,000V 1 minute current 20mA, DC 500V 100MΩ (At room temperature & Humidity) | | | |
| | INPUT-CASE, FG | AC2,000V 1 minute current 20mA, DC 500V 100MΩ (At room temperature & Humidity) | | | |
| | OUTPUT-CASE, FG | AC500V 1 minute current 100mA, DC 500V 100MΩ (At room temperature & Humidity) | | | |
| ENVIRONMENT | OPERATING TEMP AND HUMID | -10~+50°C, 20~90% RH(Non condensing) | | | |
| | STORAGE TEMP AND HUMID | -20~+75°C, 20~90% RH(Non condensing) | | | |
| | VIBRATION | 10~55Hz at 1G, 3 minutes period, 30 minutes along X, Y and Z axis | | | |
| | IMPACT | 10G for 20ms once on each X, Y and Z axis | | | |
| SAFETY | SAFETY REGULATION | UL, C-UL, CE | UL, C-UL, CE | UL, C-UL, CE | UL, C-UL, CE |
| | LINE CONDUCTED RF VOLTAGE | Complied with FCC Part15 and EN55022 Class A Limits | | | |