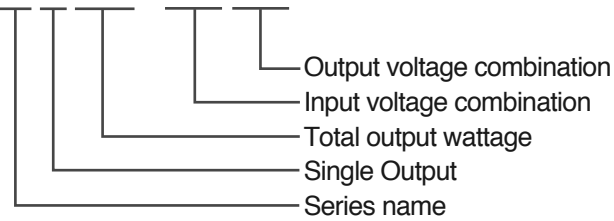


DS SERIES (SINGLE OUTPUT)

ORDERING INFORMATION

DS50-1205



- Small size
- DC input voltage
- Over current protection
- Over voltage protection
- Input Polarity protection
- 2 years Warranty



DS50-S SPECIFICATIONS

MODEL		DS50-1205	DS50-1212	DS50-1215	DS50-1224	DS50-2405	DS50-2412	DS50-2415	DS50-2424	
INPUT	VOLTAGE	DC12V (9~18V) / 8.0A				DC24V (19~36V) / 3.8A				
	VOLTAGE [V]	5	12	15	24	5	12	15	24	
OUTPUT	CURRENT [A]	10	4.2	3.4	2.5	10	4.2	3.4	2.5	
	REGULATION, LINE [mV]	25 Max	60 Max	75 Max	120 Max	25 Max	60 Max	75 Max	120 Max	
	REGULATION, LOAD [mV]	50 Max	120 Max	150 Max	240 Max	50 Max	120 Max	150 Max	240 Max	
	RIPPLE [mVp-p]	50 Max	120 Max	150 Max	240 Max	50 Max	120 Max	150 Max	240 Max	
	RIPPLE, NOISE [mVp-p]	100 Max	170 Max	200 Max	290 Max	100 Max	170 Max	200 Max	290 Max	
	TEMPERATURE DRIFT -10~+50°C [mV]	75 Max	180 Max	225 Max	360 Max	75 Max	180 Max	225 Max	360 Max	
	RISE TIME [ms]	500 Max (Rated Input Voltage, $I_o=100\%$)								
	HOLDING TIME [ms]	10 typ (Rated Input Voltage, $I_o=100\%$)								
PROTECTION CIRCUIT	OVER CURRENT PROTECTION	Works at over 110% of rating and recovers automatically								
	OVER VOLTAGE PROTECTION	Works at 115~140% of rating								
ELECTRICALLY ISOLATED	INPUT-OUTPUT	AC1,500V 1 minute current 20mA, DC 500V 100MΩ (At room temperature & Humidity)								
	INPUT-CASE, FG	AC1,500V 1 minute current 20mA, DC 500V 100MΩ (At room temperature & Humidity)								
	OUTPUT-CASE, FG	AC500V 1 minute current 100mA, DC 500V 100MΩ (At room temperature & Humidity)								
ENVIRONMENT	OPERATING TEMP AND HUMID	-10~+50°C, 20~90% RH(Non Condensing)								
	STORAGE TEMP AND HUMID	-20~+75°C, 20~90% RH(Non Condensing)								
	VIBRATION	10~55Hz at 1G, 3 minutes period, 30 minutes along X, Y and Z axis								
	IMPACT	10G for 20ms once on each X, Y and Z axis								
SAFETY	SAFETY REGULATION	-								
	LINE CONDUCTED RF VOLTAGE	-								

DS SERIES (SINGLE OUTPUT)

General Information

Switching Mode Power Supply

DC-DC Converter

Noise Filter

Solid State Relay

AC FAN Motor

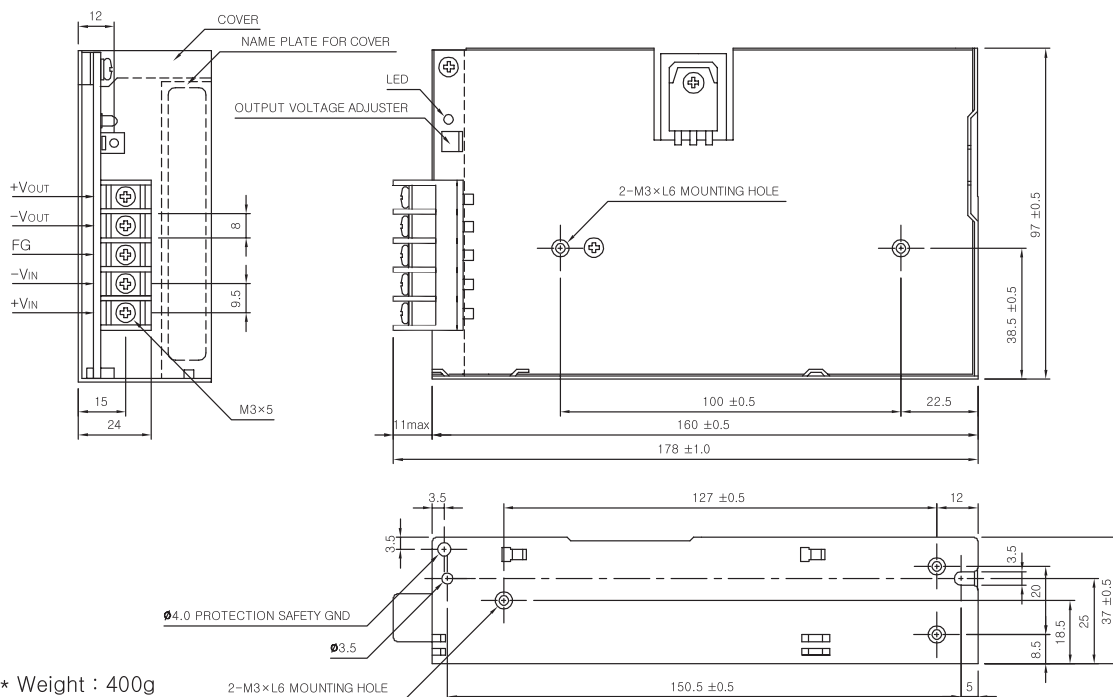
Power Module

Discrete Semiconductors

DS50-S SPECIFICATIONS

MODEL		DS50-4805	DS50-4812	DS50-4815	DS50-4824	DS50-11005	DS50-11012	DS50-11015	DS50-11024	
INPUT	VOLTAGE	DC48V (38~63V) / 2.0A				DC110V (8~160V) / 0.85A				
	VOLTAGE [V]	5	12	15	24	5	12	15	24	
OUTPUT	CURRENT [A]	10	4.2	3.4	2.5	10	4.2	3.4	2.5	
	REGULATION, LINE [mV]	25 Max	60 Max	75 Max	120 Max	25 Max	60 Max	75 Max	120 Max	
	REGULATION, LOAD [mV]	50 Max	120 Max	150 Max	240 Max	50 Max	120 Max	150 Max	240 Max	
	RIPPLE [mVp-p]	50 Max	120 Max	150 Max	240 Max	50 Max	120 Max	150 Max	240 Max	
	RIPPLE, NOISE [mVp-p]	100 Max	170 Max	200 Max	290 Max	100 Max	170 Max	200 Max	290 Max	
	TEMPERATURE DRIFT -10~+50°C [mV]	75 Max	180 Max	225 Max	360 Max	75 Max	180 Max	225 Max	360 Max	
	RISE TIME [ms]	500 Max (Rated Input Voltage, I _o =100%)								
	HOLDING TIME [ms]	10 typ (Rated Input Voltage, I _o =100%)								
PROTECTION CIRCUIT	OVER CURRENT PROTECTION	Works at over 110% of rating and recovers automatically								
	OVER VOLTAGE PROTECTION	Works at 115~140% of rating								
ELECTRICALLY ISOLATED	INPUT-OUTPUT	AC1,500V 1 minute current 20mA, DC 500V 100MΩ (At room temperature & Humidity)								
	INPUT-CASE, FG	AC1,500V 1 minute current 20mA, DC 500V 100MΩ (At room temperature & Humidity)								
	OUTPUT-CASE, FG	AC500V 1 minute current 100mA, DC 500V 100MΩ (At room temperature & Humidity)								
ENVIRONMENT	OPERATING TEMP AND HUMID	-10~+50°C, 20~90% RH(Non Condensing)								
	STORAGE TEMP AND HUMID	-20~+75°C, 20~90% RH(Non Condensing)								
	VIBRATION	10~55Hz at 1G, 3 minutes period, 30 minutes along X, Y and Z axis								
	IMPACT	10G for 20ms once on each X, Y and Z axis								
SAFETY	SAFETY REGULATION	-								
	LINE CONDUCTED RF VOLTAGE	-								

DS50-S EXTERNAL VIEW



- * Weight : 400g
- * Tolerance : ±1
- * Dimensions in mm